

ISOCOVERS

Insulation Systems

HOW TO MEASURE FOR YOUR ISOCOVERS ISO-ELBOW

Selecting the right size ISOCOVERS ISO-ELBOW for your equipment is a lot easier than you might think. All you need is a tape measure, and you are ready to go!

CLICK [HERE](#) FOR VIDEO TUTORIAL: **HOW TO MEASURE ISOCOVERS ISO-ELBOW**

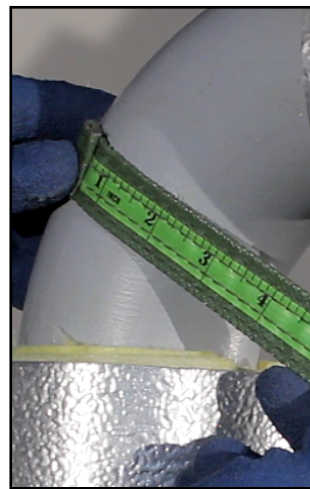
WARNING: When installing or measuring for ISO-ELBOW, please follow all safety precautions and use proper and adequate protective safety aids such as: protective gloves and suitable protective clothing. Never use a metal tape for measuring purposes. Failure to do so may result in injury.

1. MEASURE FOR EITHER THE (1) CIRCUMFERENCE OR (2) DIAMETER:



CIRCUMFERENCE

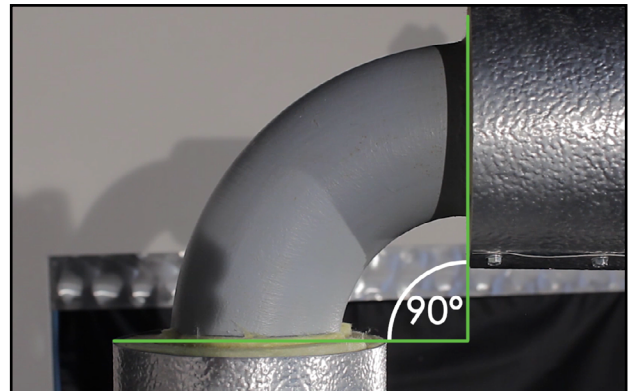
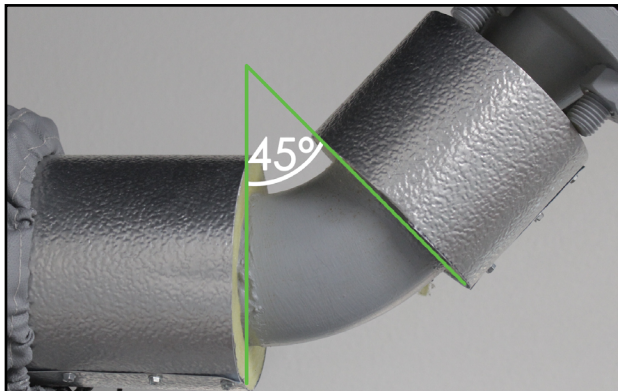
OR



DIAMETER

NOTE: It does not matter which method of measurement you decide to use. Just remember that you only need to find your measurement using one of the two ways described above.

2. MEASURE FOR THE DEGREE ANGLE:



DEGREE ANGLE

NOTE: After measuring either the circumference or diameter, you also need to find the degree measure to determine the angle of the application you want to insulate.



ISOCOVERS

Insulation Systems

3. FIND THE RIGHT ISOCOVERS ISO-ELBOW:

The **CIRCUMFERENCE** (length) is 12in and the degree angle is 90° = **IE 0490**.

FOR EXAMPLE: OR

The **DIAMETER** (length) is 4in and the degree angle is 90° = **IE 0490**.

DEGREE ANGLE

CIRCUMFERENCE	DIAMETER	45° Angle	90° Angle
0in - 6in (0mm-152mm)	0in-2in (0mm-60mm)	IE 0245	IE 0290
6in-13in (152mm-330mm)	2in-4in (60mm-102mm)	IE 0445	IE 0490
13in-19in (330mm-483mm)	4in-6in (102mm-152mm)	IE 0645	IE 0690
19in-25in (483mm-635mm)	6in-8in (152mm-203mm)	IE 0845	IE 0890
25in-31in (635mm-787mm)	8in-10in (203mm-254mm)	IE 1045	IE 1090
31in-38in (787mm-965mm)	10in-12in (254mm-305mm)	IE 1245	IE 1290
38in-44in (965mm-1118mm)	12in-14in (305mm-356mm)	IE 1445	IE 1490
44in-50in (1118mm-1270mm)	14in-16in (356mm-406mm)	IE 1645	IE 1690
50in-57in (1270mm-1448mm)	16in-18in (406mm-457mm)	IE 1845	IE 1890

NOTE: Now that you have your measurements, you can use the graph above to help you find the appropriate ISOCOVERS ISO-ELBOW part number. Diameter and circumference (length) measurements are listed in the table rows vertically and degree angles are listed in the column rows horizontally.

CLICK [HERE](#) FOR VIDEO TUTORIAL: **HOW TO INSTALL ISOCOVERS ISO-ELBOW**