

# 104R Ball Valve

## 1-Piece Reduced Port



For Manual Service

General

Industrial

Other Corrosion  
Resistant Applications

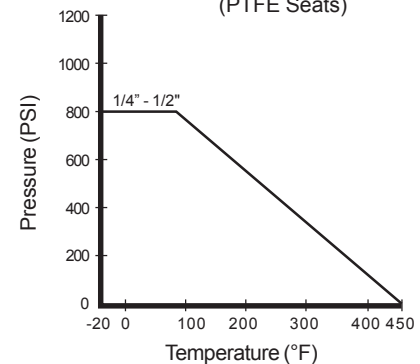
## Standard Features and Benefits

- **Economical 1-Piece Design**
- **Male x Female Connections**  
The 104R has been designed with opposing male x female NPT connections in a number of size combinations to eliminate the need for pipe nipples. This decreases the number of potential leak paths and reduces overall length
- **Blow-Out-Proof Stem**
- **Made of Corrosion-Resistant 316 SS (A 351Gr. CF8M)**  
One valve can be used for many service conditions
- **Investment Cast**  
High quality investment castings improve dimensional control and reduce porosity

## Options

- Certified material test reports are available upon request

104R Pressure / Temperature Chart  
(PTFE Seats)

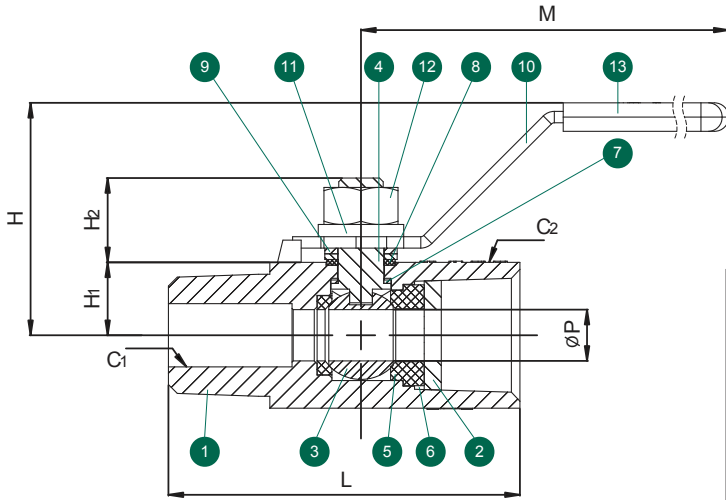
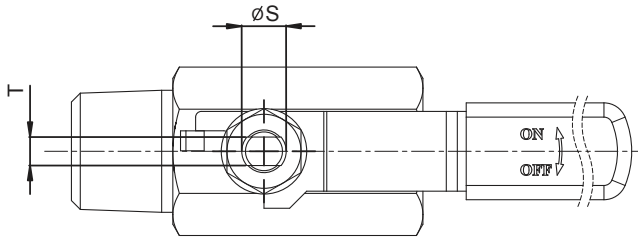


## Operating Conditions

- Temperature range (PTFE):  
-20°F ~ 450°F
- Maximum pressure (PTFE):  
800 PSI CWP (1/4" ~ 1/2")

## Specifications

- All valves designed and pressure tested in accordance with ANSI/ASME B16.34, API 598, and MSS-SP-110
- All materials comply with applicable ASTM material specifications



Valve Components			
#	Part Name	Material	Qty.
1	Body	A351 Gr. CF8M	1
2	Insert	316SS	1
3	Ball	316SS	1
4	Stem	316SS	1
5	Seat	PTFE	2
6	Body Seal	PTFE	1
7	Thrust Washer	RTFE (15% C.F.)	1
8	Stem Packing Set	PTFE	1
9	Packing Gland	304SS	1
10	Handle	304SS	1
11	Split Washer	304SS	1
12	Handle Nut	304SS	1
13	Handle Cover	Vinyl	1

Dimensions (Inches)									
Size C <sub>1</sub> x C <sub>2</sub>	L	P	M	H	H <sub>1</sub>	H <sub>2</sub>	S	T	Weight (lbs)
1/4 x 1/4	1.84	0.20	3.49	1.40	0.33	0.37	0.19	0.12	0.19
1/4 x 3/8	2.03	0.28	3.48	1.48	0.42	0.42	0.23	0.16	0.25
1/4 x 1/2	2.33	0.35	3.97	1.61	0.50	0.58	0.31	0.20	0.38
3/8 x 3/8	2.03	0.28	3.49	1.48	0.42	0.42	0.23	0.16	0.28
3/8 x 1/2	2.33	0.35	3.97	1.61	0.50	0.58	0.31	0.20	0.38
1/2 x 1/2	2.43	0.35	3.97	1.61	0.50	0.58	0.31	0.20	0.44

## 104R Ordering Information

Example: 1/4" MNPT X 1/4" FNPT Ball Valve with Lever Handle, 316SS Body and Trim, PTFE Seats and Seals, NPT Ends

Valve Series	Valve Size (C <sub>1</sub> x C <sub>2</sub> )	Body Material	End Material	Ball Material	Stem Material	Seat	Seal	End Connections	Port	Ball Config.
<b>104R</b> - Reduced Port	<b>T</b> <b>U</b> <b>V</b> <b>W</b> <b>X</b> <b>Y</b> 1/4" x 1/4" 1/4" x 3/8" 1/4" x 1/2" 3/8" x 3/8" 3/8" x 1/2" 1/2" x 1/2"	<b>6</b> - A351 Gr. CF8M (316)	<b>6</b> - A351 Gr. CF8M (316)	<b>6</b> - A351 Gr. CF8M (316)	<b>6</b> - A351 Gr. CF8M (316)	<b>T</b> - PTFE	<b>T</b> - PTFE	<b>MT</b> - MNPT x FNPT	<b>2</b> - 2 Way	<b>S</b> - Straight Port

Due to continuous product development, information may change without notice.



**INLINE INDUSTRIES, INC.**

9056 Garvey Ave  
 Rosemead, CA 91770  
 Tel: (800) 568-8998  
 (626) 813-6188  
 Fax: (626) 813-6186  
 www.ballvalve.com  
 info@ballvalve.com

Distributed by: