

103R Ball Valve

1-Piece Reduced Port



For Manual Service

General

Industrial

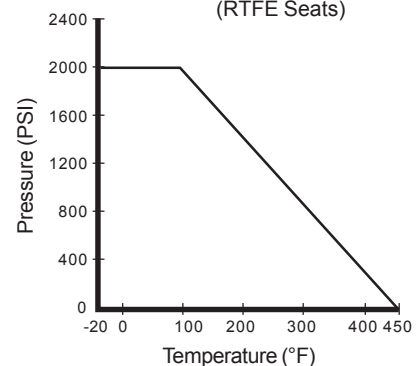
Standard Features and Benefits

- **Economical 1-Piece Design**
- **High Pressure Barstock Construction**
Body and seals designed to perform under greater loads than standard 1-piece ball valves
- **Blow-Out-Proof Stem**
- **Corrosion Resistant Trim**
Stem and ball are made of corrosion resistant stainless steel for trouble-free service and long life
- **Positive Handle Stop**
Valve uses body as a positive handle stop to ensure consistent 90° rotation

Options

- Certified material test reports are available upon request
- Carbon Steel Construction to NACE MR0175/ISO 15156

103 Pressure / Temperature Chart
(RTFE Seats)

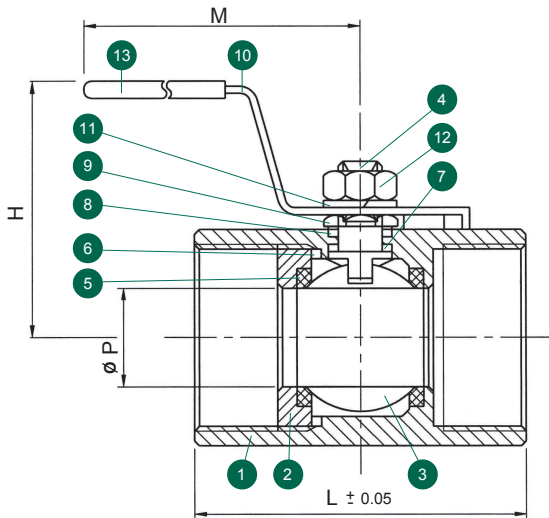
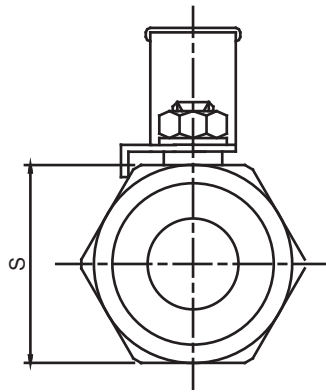


Operating Conditions

- Temperature range (RTFE):
-20°F ~ 450°F
- Maximum pressure (RTFE):
2000 PSI CWP

Specifications

- All valves designed and pressure tested in accordance with ANSI/ASME B16.34, API 598, and MSS-SP-110
- All materials comply with applicable ASTM material specifications



Valve Components			
#	Part Name	Material	Qty.
1	Body	S25C - CS	1
2	Insert	S25C - CS	1
3	Ball	304SS	1
4	Stem	304SS	1
5	Seat	RTFE (15% G.F.)	2
6	Body Seal	PTFE	1
7	Thrust Washer	PTFE	1
8	Stem Packing	PTFE	1
9	Packing Gland	304SS	1
10	Handle	304SS	1
11	Lock Washer	304SS	1
12	Handle Nut	304SS	1
13	Handle Cover	Vinyl	1

Dimensions (Inches)						
Size	L	P	M	H	S	Weight (lbs)
1/4	1.71	0.20	2.40	1.14	0.67	0.22
3/8	1.89	0.28	3.15	1.38	0.83	0.31
1/2	2.20	0.36	4.09	2.60	0.99	0.62
3/4	2.56	0.49	4.21	2.72	1.22	0.92
1	3.05	0.59	4.65	2.95	1.50	1.41
1 1/4	3.62	0.79	5.75	3.07	1.90	3.04
1 1/2	3.78	0.98	5.83	3.35	2.09	3.08
2	4.49	1.26	5.91	3.86	2.67	5.90

103R Ordering Information

Example: 2" Ball Valve with Lever Handle, Carbon Steel (CS) Body and 304SS Trim, RTFE (15% G.F.) Seats and PTFE Seals, NPT Ends

Valve Series	Valve Size	Body Material	End Material	Ball Material	Stem Material	Seat	Seal	End Connection	Port	Ball Config.
103R - Reduced Port	2 3 5 7 A B C D	2 - S25C - CS	2 - S25C - CS	4 - A351 Gr. CF8 (304)	4 - A351 Gr. CF8 (304)	R - RTFE (15% G.F.)	T - PTFE	T - NPT	2 - 2 Way	S - Straight Port
	1/4" 3/8" 1/2" 3/4" 1" 1 1/4" 1 1/2" 2"									

Due to continuous product development, information may change without notice.



INLINE INDUSTRIES, INC.

9056 Garvey Avenue
 Rosemead, CA 91770
 Tel: (800) 568-8998
 (626) 813-6188
 Fax: (626) 813-6186
 www.ballvalve.com
 info@ballvalve.com

Distributed by: